

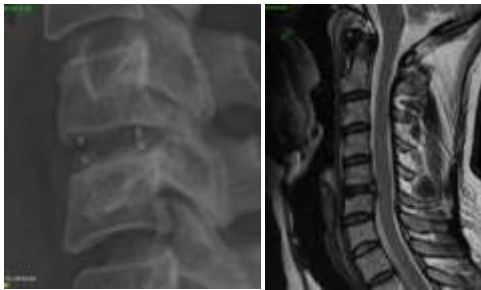
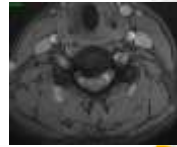


## Importance of oblique view of 3D Computer Tomography in determining cervical foraminal stenosis

Prof. Cumhuri KILINÇER, MD PhD  
Trakya University

## CASE

- 40 yo, Female
- C5-C6 ACDF due to right arm pain
- 9 months after operation: no improvement
- Right arm pain, numbness, slight weakness at forearm flexion



## CT



What to do?



Cervical intervertebral foramen



Cervical intervertebral foramen



Cervical intervertebral foramen

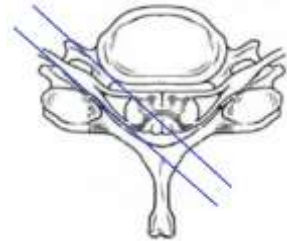


Cervical intervertebral foramen

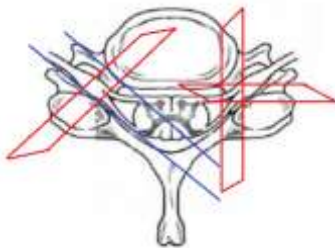


Cervical intervertebral foramen

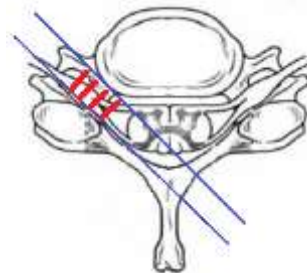
Posteromedial to Anterolateral (oblique) direction



Importance of Oblique Plane



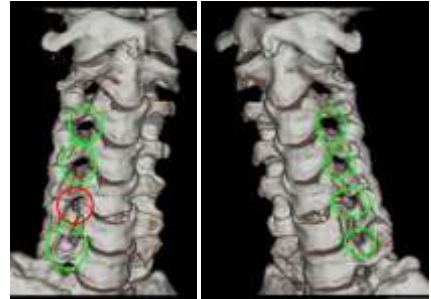
Importance of Multiple Slices



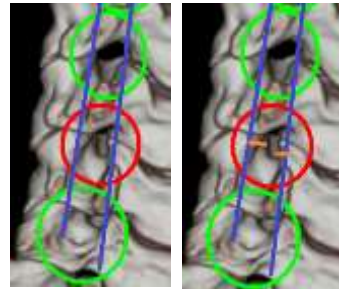
### 3D CT



### 3D BT

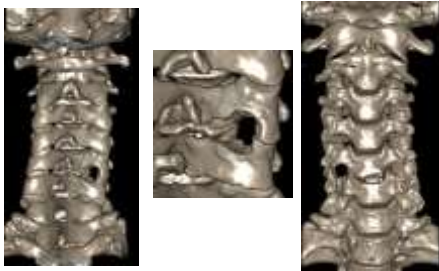


### Major site of compression: Facet



### Operation performed

- C5-C6 right posterior foraminotomy



### Result



Complete resolution of the pain

## Conclusion

- Cervical neural foramen is a three dimensional structure
- It has a posteromedial to anterolateral direction
- Axial, coronal and sagittal views may not give a true appreciation of the foramen
- Oblique view of 3D-CT is the best tool to demonstrate bony anatomy of the neural foramen

